



## MAINTENANCE SHEET

### Positioning the support piece into the UNI-2

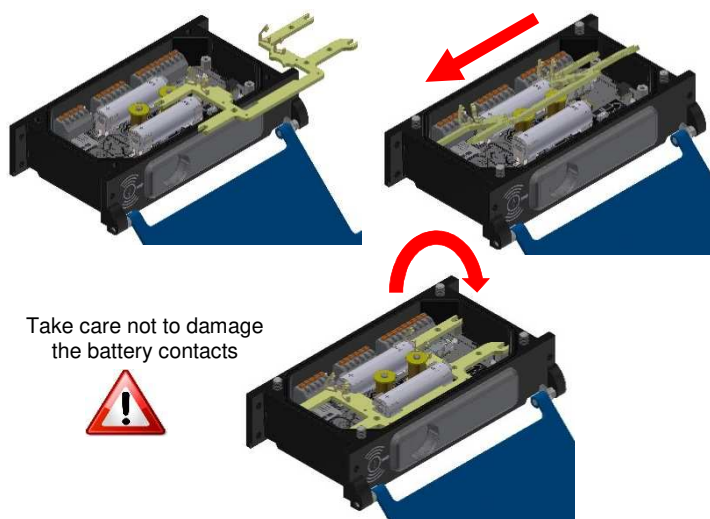
FM 8019 EN A  
[www.alma-alma.fr](http://www.alma-alma.fr)

**If required, the verification seals have to be broken by authorized personnel only**

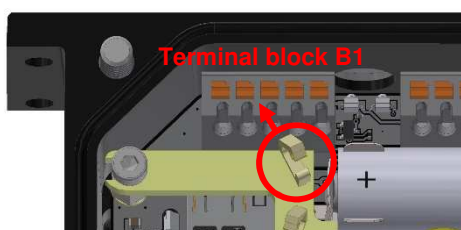
**Useful material:** a 4mm Allen wrench, a 2.5mm Allen wrench, a 5mm-hexagonal socket wrench, low-strength thread, cutting tool to remove the heat shrink sleeve.



#### 5. Mounting the support piece



#### 10. Cable tie: hinge on the side of terminal block B1



The support piece is used to lock the batteries and to make sure the wires or the packet don't get caught when closing the UNI-2.

#### Removing the UNI-2:

1. Remove the UNI-2 from the turbine: unscrew and remove the 4 M5x30 screws with the 4mm-Allen wrench. Put aside screws and washers
2. Unwire the terminal blocks (if required, note the wiring of the liquid detectors and the probe).

#### Mounting the support piece:

3. Unscrew and remove the 4 M3x6 screws and washers
4. Fix the electronic board with the 4 M/F M3x6 spacers, insulating washers and low-strength thread
5. Insert the support piece (equipped with cable ties and silica packet) by tilting it on the terminal block side and then apply it, taking care not to damage the battery contacts
6. Fix the support piece with the 4 M3x6 screws and wave washers.

#### Wiring the UNI-2:

7. Remove part of the heat shrink sleeve from the probe (3 wires) leaving about 1cm
8. Remove part of the heat shrink sleeve from the liquid detectors (6 wires) leaving about 7cm
9. Wire all the wires to terminal blocks according to assignments.

#### Mounting the UNI-2:

10. Align the cable tie close to terminal block B1 as shown in the illustration (hinge on the side of terminal block B1)
11. Present the UNI-2 on the terminal block side towards the turbine
12. Pass the wires of the liquid detectors through the cable ties near the terminal blocks (position the 6 wires between the terminal blocks and the battery). Lock the cable ties
13. Pass the probe wires through the other cable ties (position the wires between the 2 coils and the battery). Lock the cable ties
14. Tilt the UNI-2 and make sure the wires don't get caught. Screw on the turbine with the 4 M5x30 screws and washers.