



# Gravicompt UNI 2

## Application

Dedicated to gravity deliveries of petroleum products, from a compartment,  
semi-trailers and carrier trucks  
Partial or full delivery by preset or free mode (metering)  
Gas presence control thanks to 2 gas sensors (no gas separator needed)  
Custody transfert measurement

## Advantages

Light and compact installation, with UNI electronic calculator and ADRIANE turbine  
Bi-directional measuring for loading/unloading  
Wired power supply and built-in batteries  
No pressure drop  
Conversion volume at 15 or 20°C  
Preset deliveries via MPLS module  
Delivery ticket through Alma Inside app  
Multiple connections : GPS, bluetooth, wifi, data transfer (CTD+ transfer key)

## Certifications



Material in conformity with measuring instruments  
directive 2014/32/EU (MID)



ISO 9001



Conformity Zone 1, II 2 G



European certifications in  
accordance with directives  
concerning measuring  
instruments and equipment  
installed in explosive  
area




## Hardware

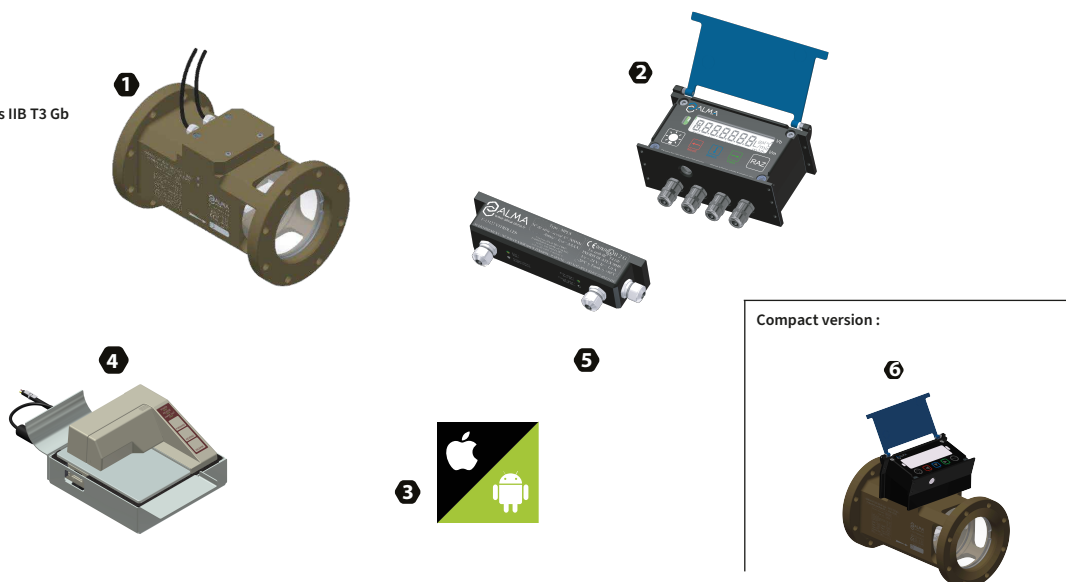
- 1 Turbine  II 2 G Ex h IIC T6 Gb
- 2 UNI electronic calculator -  II 2 G Ex ia op is IIB T3 Gb

## Software

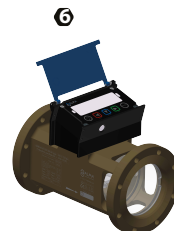
- 3 Alma Inside application :  
Android/IOS for smartphones and tablets)

## Options

- 4 Printer kit (outside ATEX zone)  
for UNI with MPLS
- 5 MPLS (option) -  II 2 G Ex e mb IIC T4 Gb
- 6 Compact version



Compact version :



### Step 1

intuitive manual setting  
for the truck driver

### Step 2

Full or partial  
gravity delivery

### Step 3

Delivery ticket ready  
to be printed (saved)

## Technical characteristics

### GENERAL CHARACTERISTICS OF COMPONENTS

**Measured Liquids :** Fuel, diesel, gasoline, jet

**Delivery Flow rate :** 8-80m<sup>3</sup>/h\*  
(130 - 1300 L/min)

**Loading Flow rate :** 15-150m<sup>3</sup>/h  
(250 - 2500 L/min)

**Accuracy class :** 0,5

**Accuracy :** 0,1%\*

**Repeatability :** 0,02%

**Scale interval :** 1L


**Max pressure :** 5 bars

**Temperature :** -20°C to +50°C

**Weight :** 7 kg

**Communication :**  
Bluetooth /  
WIFI, integrated GPS -  
serial connection for printer  
(on MPLS)



**Turbine body :** Aluminium 

**Size :** 4" DN100, TTMA connections

**Viscosity :** up to 13 mm<sup>2</sup>/s

**UNI 2 electronic calculator :**

**LCD screen :-** Easy & simple navigation menu  
- Alarm message integrated  
- Units : Liters : m<sup>3</sup>/h, L/min,  
Gallons : Gal/min  
- Language : EN, FR, SP, IT

**Power supply :** Wired (12V or 24V) and  
built-in battery

**Memory :** 9 000 measurements

**Certificate Gravicompt uni :** [LNE-30858 \(MID\)](#)

**Certificate Turbine :** [LNE-12393 \(Guide Welmec 8.8\)](#)

**Certificate Calculator :** [LNE-25603 \(Guide Welmec 8.8\)](#)

### OPTIONS :

#### 2 possible versions :

- *Remote :* UNI-2 calculator  
4" Adriane turbine with a  
5m cable
- *Compact :* UNI-2 calculator mounted  
on a 4" Adriane turbine
- MPLS (Preset module)  
Printer kit (if MPLS)
- Alma inside application

\*In delivery and depending on the conditions of use

JOIN US:  

Head Office : 4A, boulevard de la Gare, porte 1, F-94470 Boissy Saint Léger  
Ph. : +33 1 45 69 44 70  
Mail : [info@alma-carbovac.com](mailto:info@alma-carbovac.com)

[www.alma-carbovac.com](http://www.alma-carbovac.com)



**ALMA GROUP**  
SECURE YOUR FLUID TRANSFER