



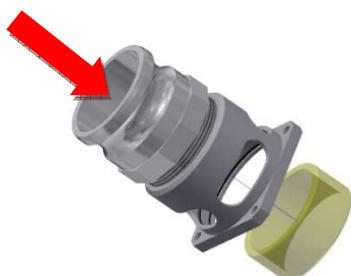
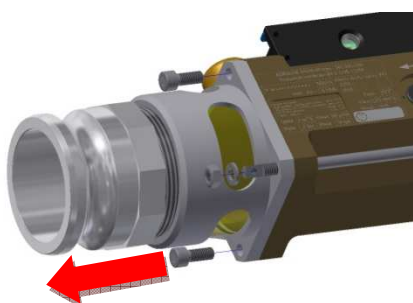
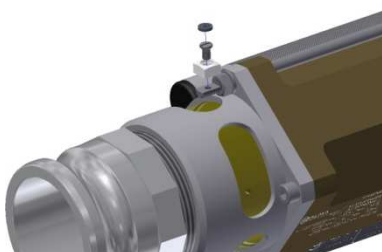
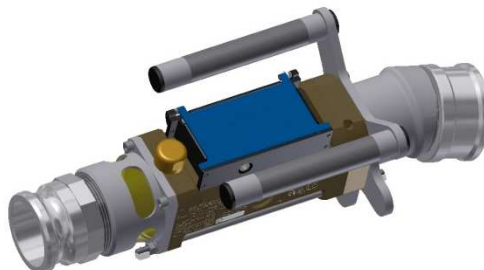
MAINTENANCE SHEET

REPLACEMENT OF THE SIGHT GLASS ON THE FLEXICOMPT AUTONOME+

FM 8015 EN B
www.alma-alma.fr

If required, sealing removal must be performed by authorized personnel only

USEFUL MATERIAL: 1 sight glass, 1 screwdriver, 1 6-hexagonal socket wrench, 1 13-open ended wrench, 1 pin punch, 1 hammer and UNIL-OPAL food-grease or equivalent



1 REMOVAL

- If necessary, unseal the sealed cup
- Unscrew the sealed cup screw with a screwdriver
- Remove the sealed cup

- Unscrew the 3 CHC screw with the hexagonal socket wrench
- Unscrew the nut with the open-ended wrench

- Remove the downstream sleeve

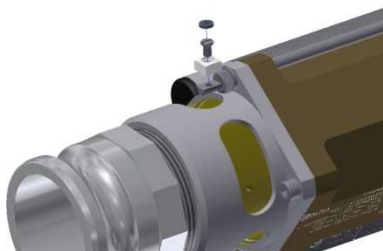
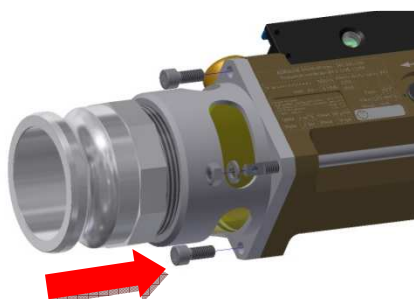
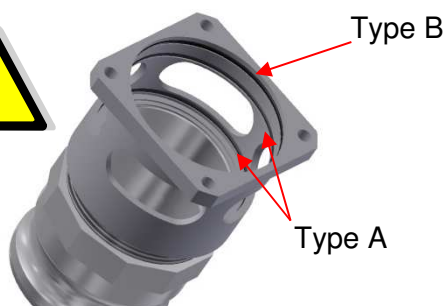
- Remove the sight glass with the screwdriver or with the pin punch and the hammer



MAINTENANCE SHEET

REPLACEMENT OF THE SIGHT GLASS ON THE FLEXICOMPT AUTONOME+

FM 8015 EN B
www.alma-alma.fr



2 REASSEMBLY

- Make sure that the 3 O-rings are fresh, replace them if necessary
Warning:
2 x O-rings type A: Ø91 x 3 for the sight glass
1 x O-rings type B: Ø92 x 2.5 for the downstream sleeve
- Grease the O-rings with UNIL OPAL food grease or equivalent
- Grease the external surfaces of the sight glass with UNIL OPAL food grease or equivalent
- Place the sight glass in the downstream sleeve
- Push it right up to the stop point
- Place the downstream sleeve on the FLEXICOMPT AUTONOME+ body
- Put the screws and the nut and washer without tightening
- Tighten them by using a cross pattern with the hexagonal socket wrench and the open-ended wrench
- Put the sealed cup on the threaded rod
- Screw the sealed cup screw with a screwdriver
- If necessary, seal it with an 8-diameter sealing